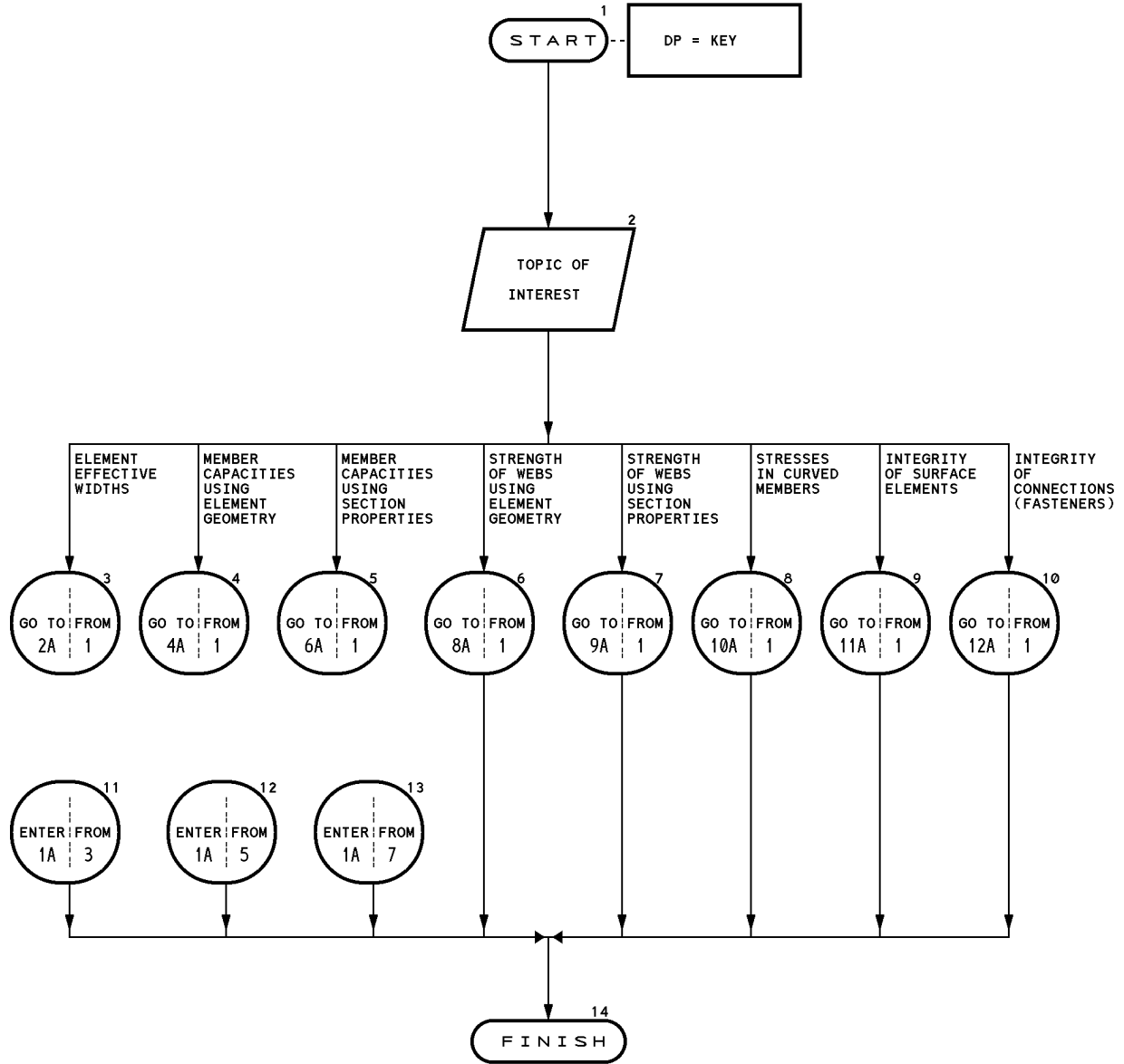


5.1 KEY TO CARS DESIGN PROCEDURES

The following pages contain the Key to CARS Design Procedures for [Section 3.1](#) to [Section 3.4](#). Key is provided to assist the user in selecting and using the correct procedure for the problem at hand.

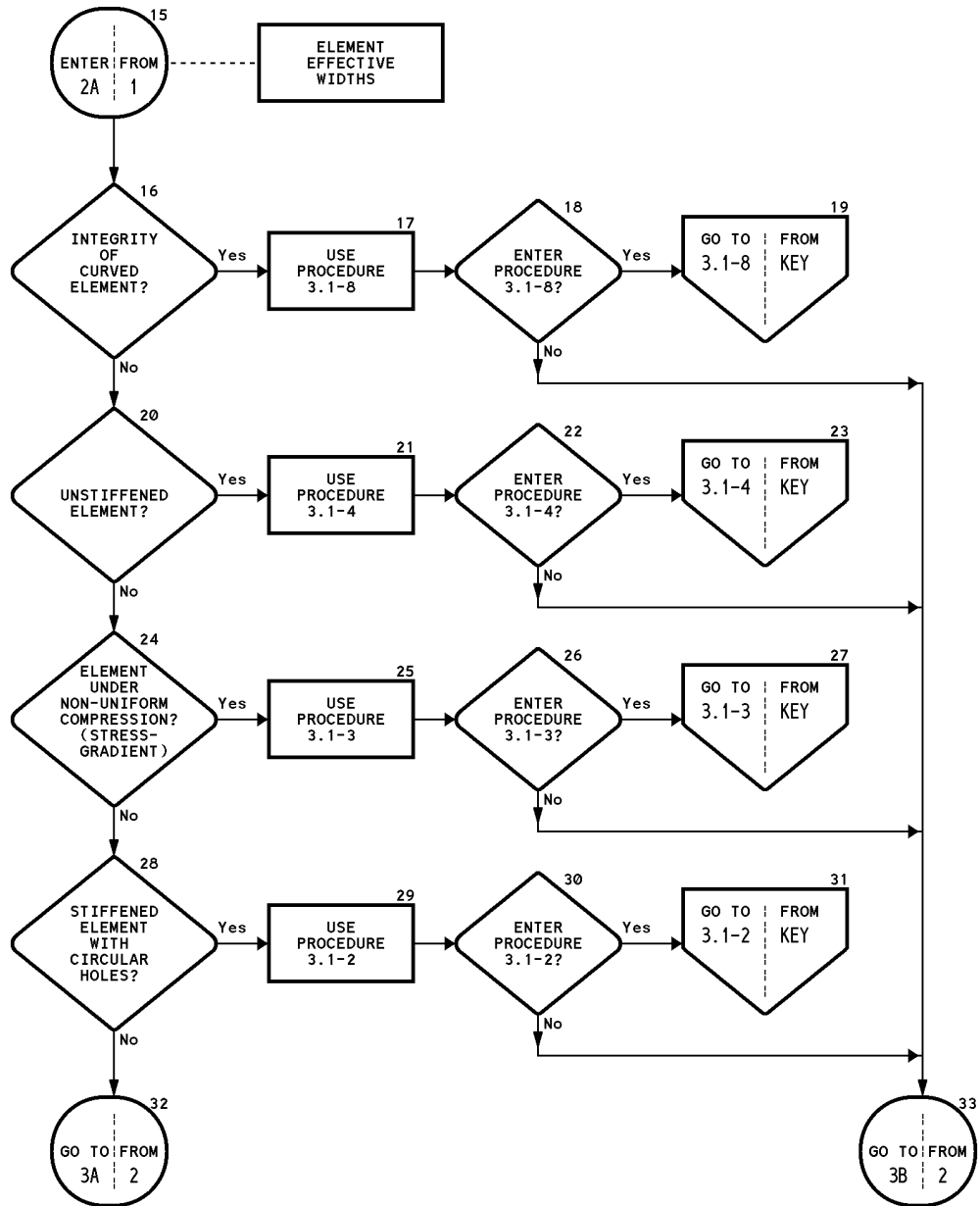
KEY TO CARS DESIGN PROCEDURES (1 of 12)

Reference: Sections 3.1 - 3.4



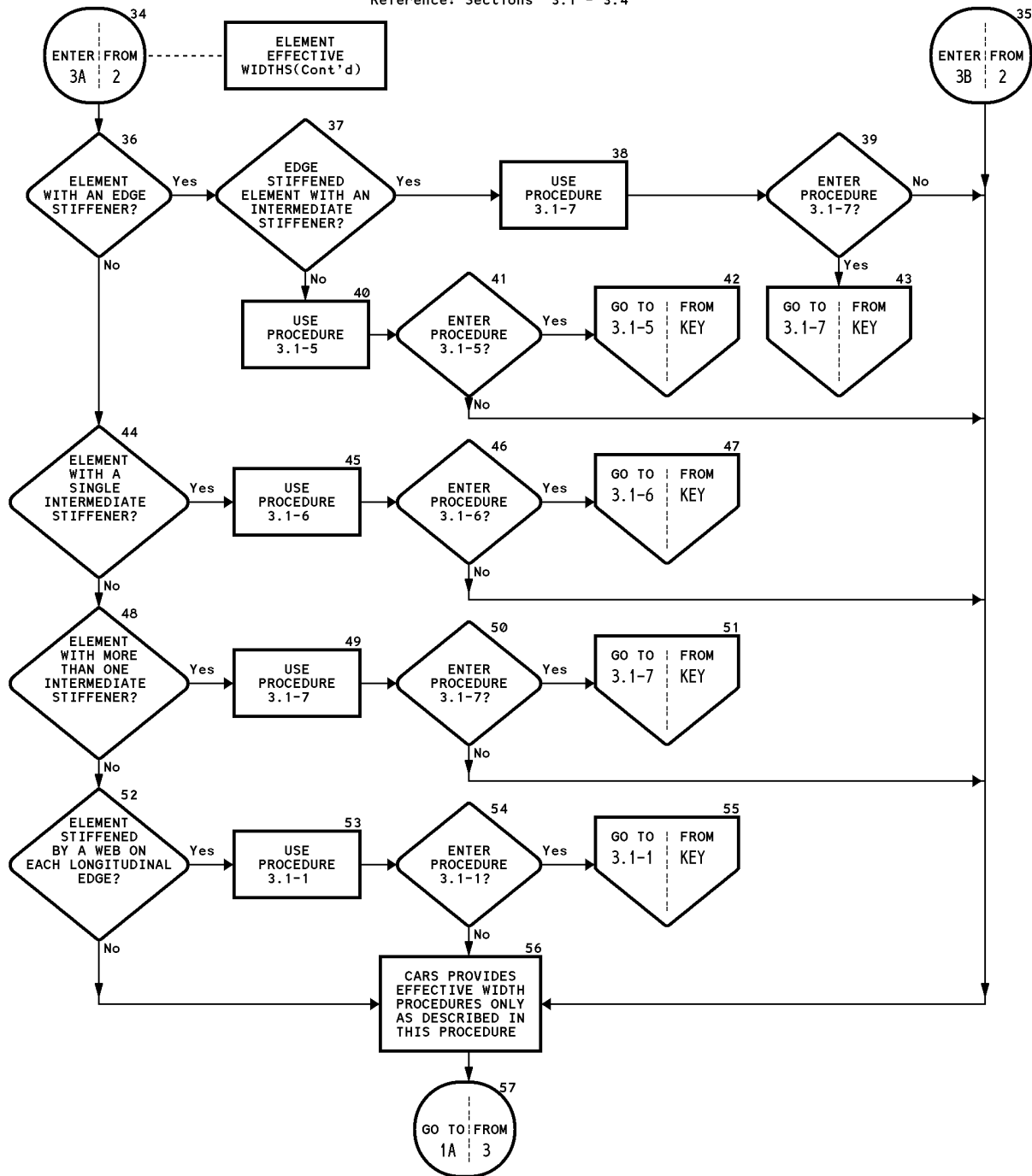
KEY TO CARS DESIGN PROCEDURES (2 of 12)

Reference: Sections 3.1 - 3.4



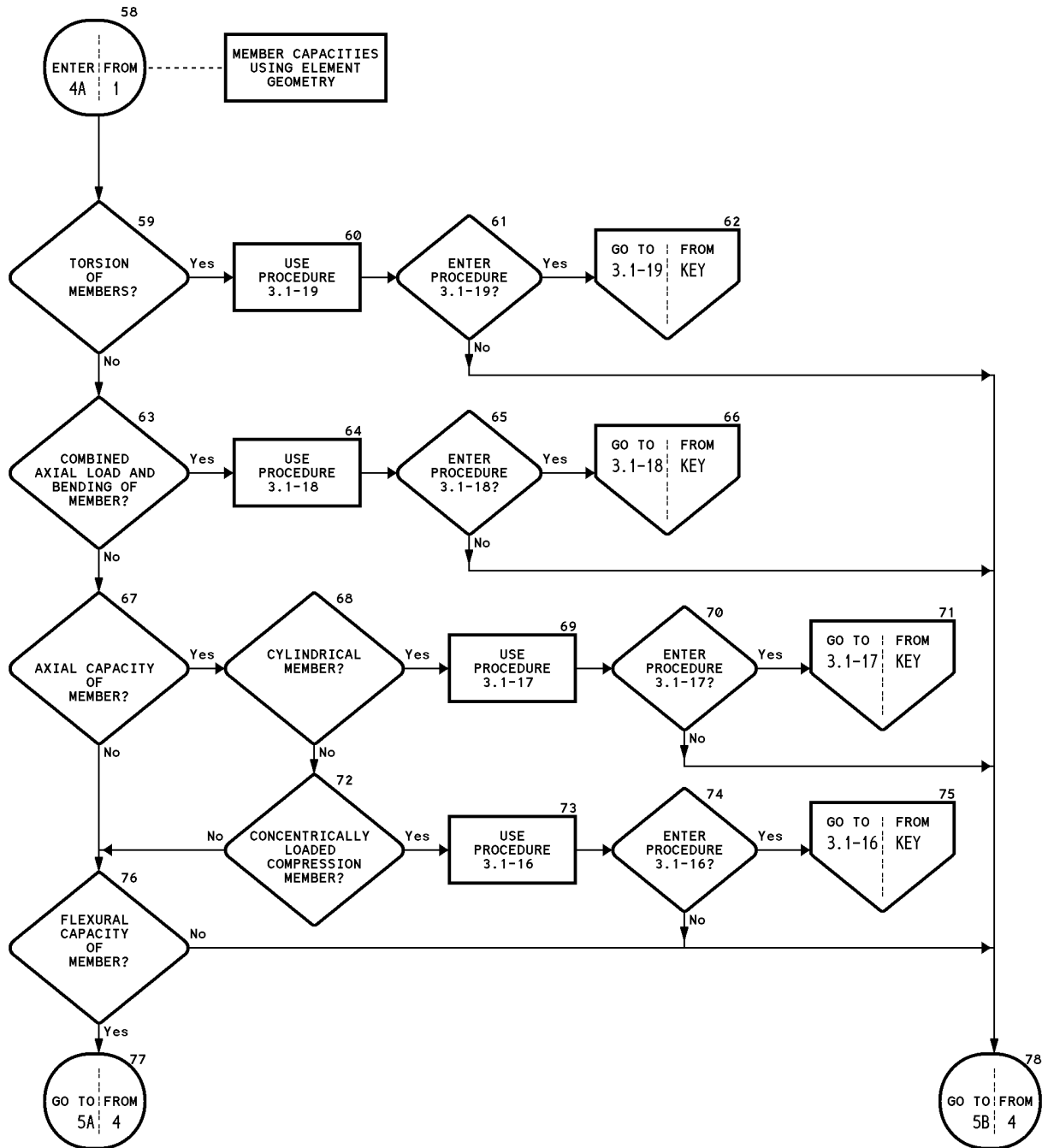
KEY TO CARS DESIGN PROCEDURES (3 of 12)

Reference: Sections 3.1 - 3.4



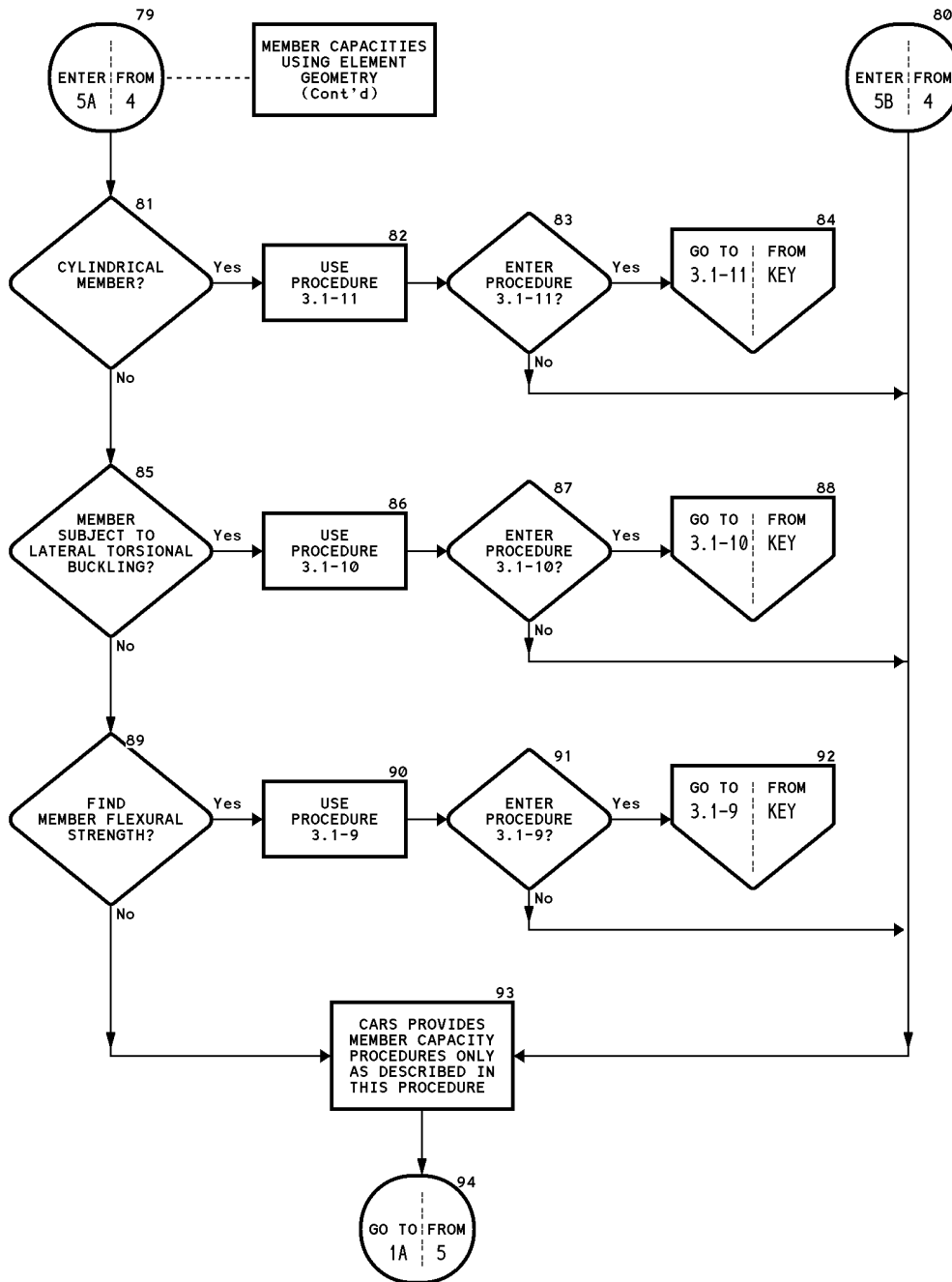
KEY TO CARS DESIGN PROCEDURES (4 of 12)

Reference: Sections 3.1 - 3.4



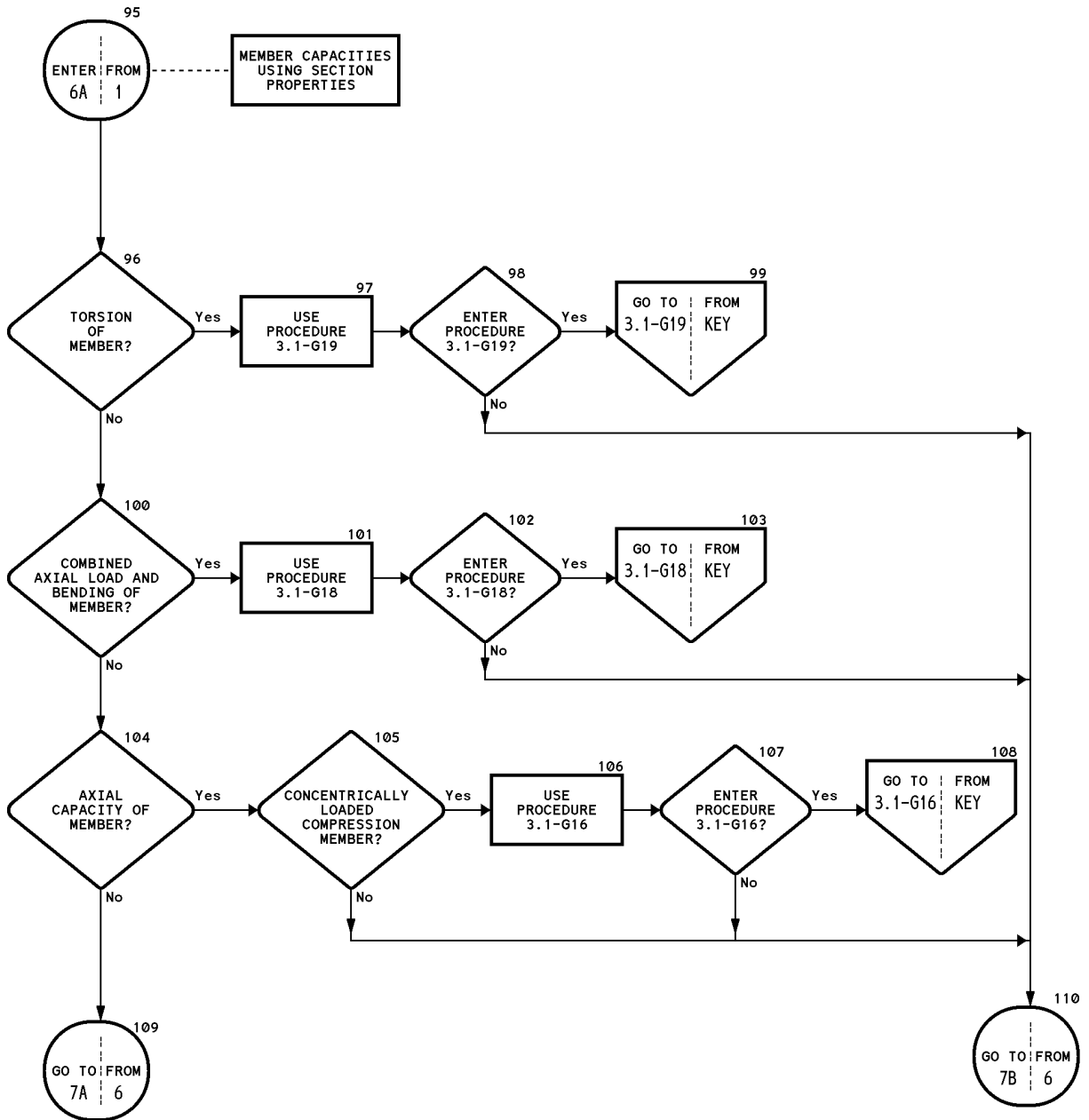
KEY TO CARS DESIGN PROCEDURES (5 of 12)

Reference: Sections 3.1 - 3.4



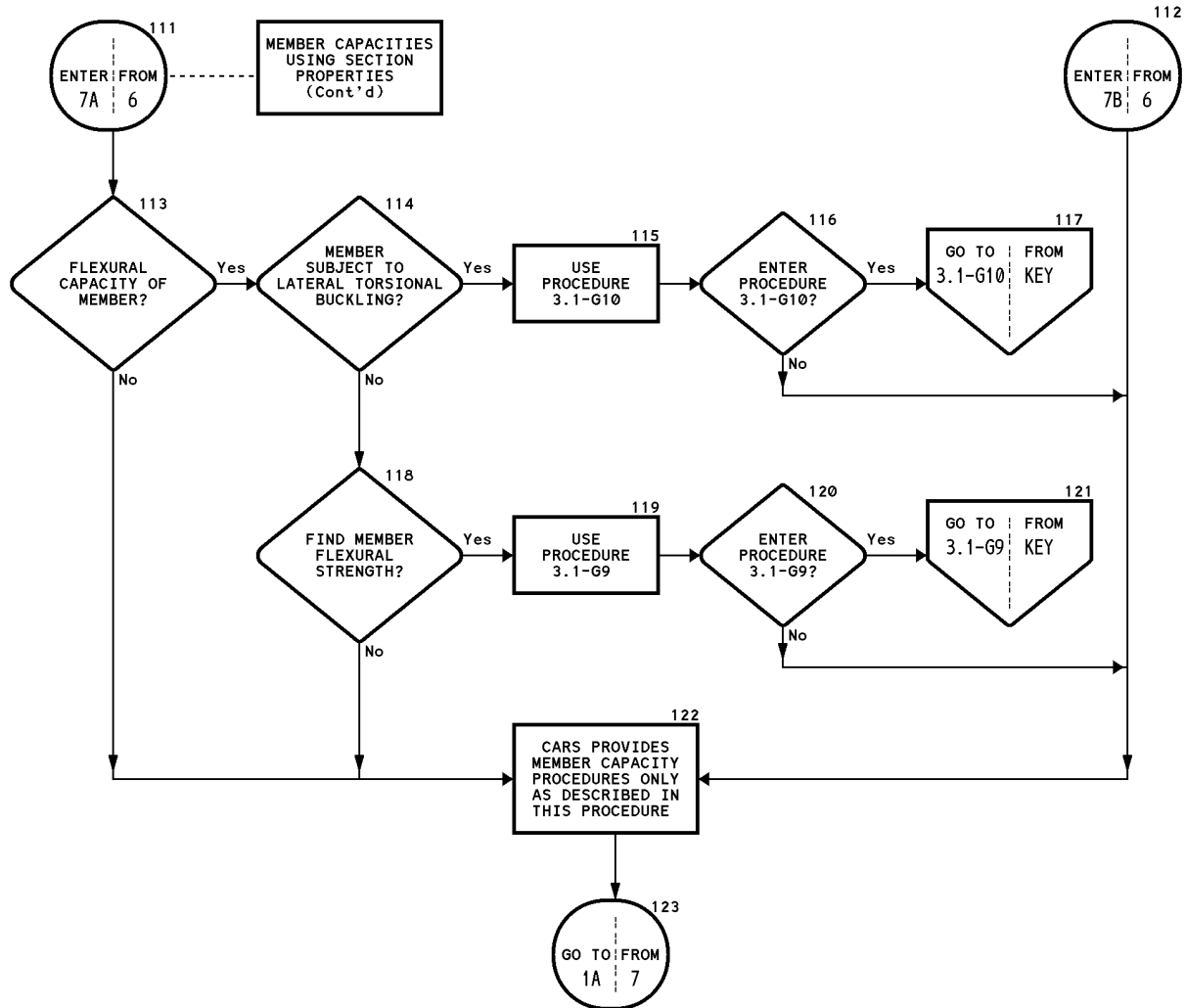
KEY TO CARS DESIGN PROCEDURES (6 of 12)

Reference: Sections 3.1 - 3.4



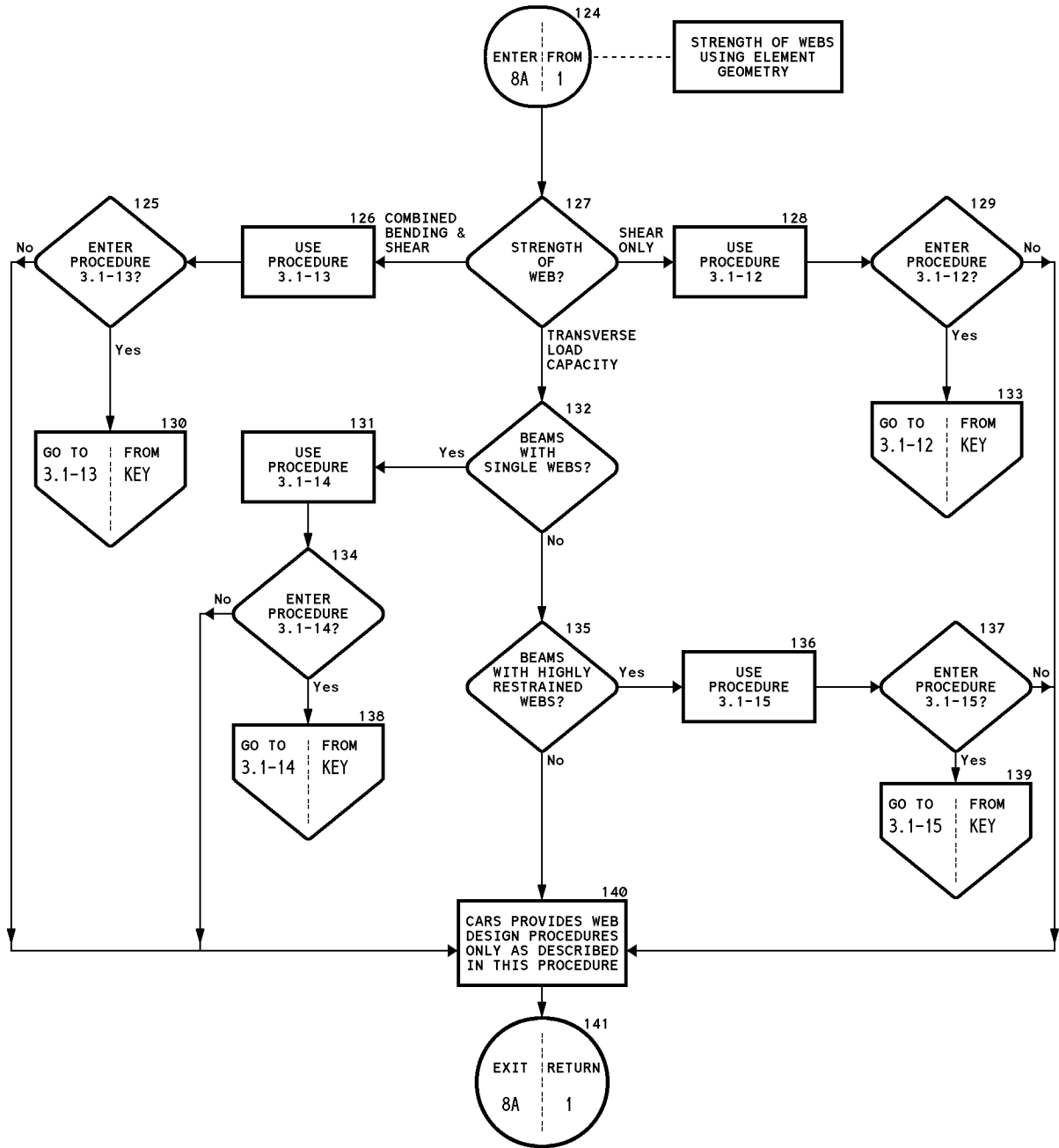
KEY TO CARS DESIGN PROCEDURES (7 of 12)

Reference: Sections 3.1 - 3.4



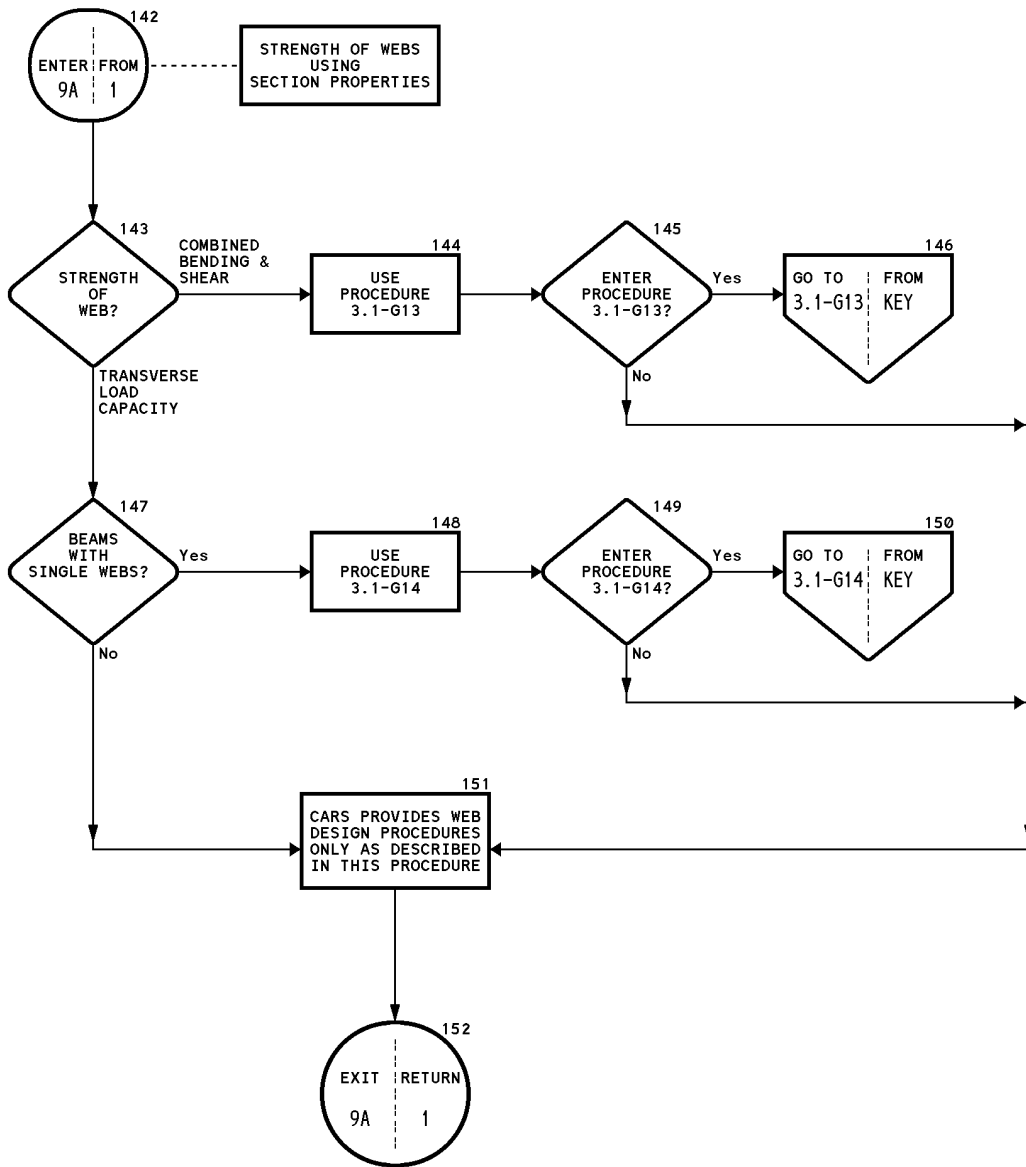
KEY TO CARS DESIGN PROCEDURES (8 of 12)

Reference: Sections 3.1 - 3.4



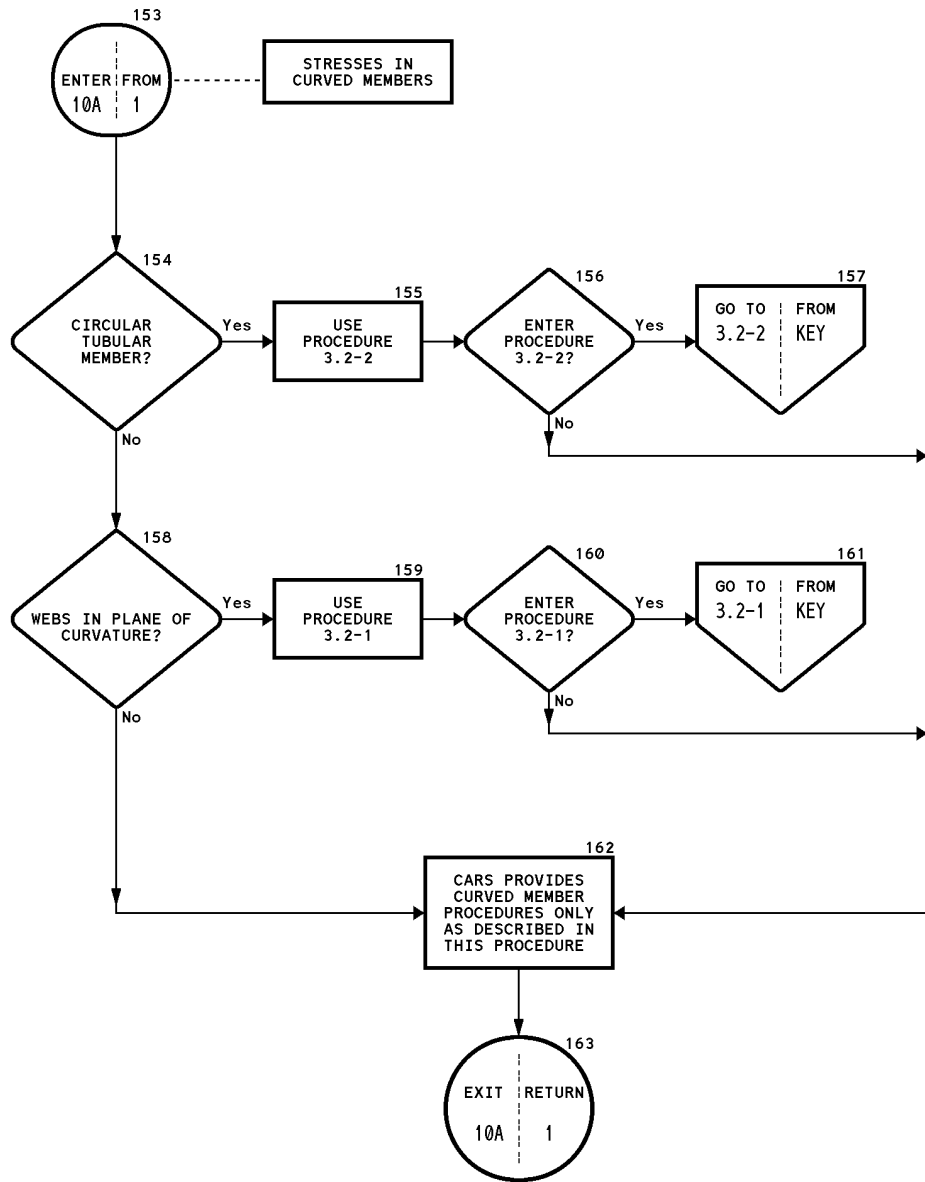
KEY TO CARS DESIGN PROCEDURES (9 of 12)

Reference: Sections 3.1 - 3.4



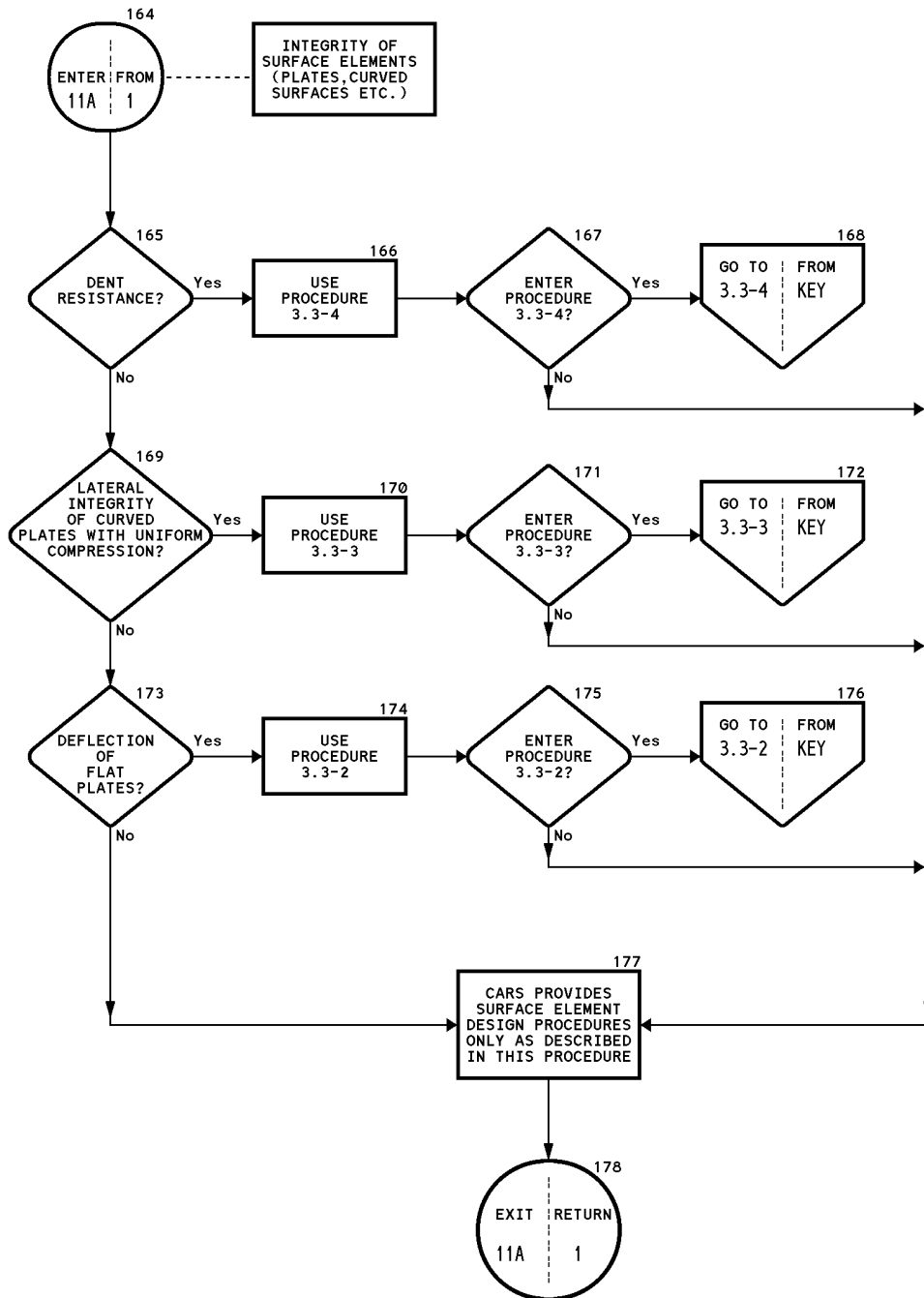
KEY TO CARS DESIGN PROCEDURES (10 of 12)

Reference: Sections 3.1 - 3.4



KEY TO CARS DESIGN PROCEDURES (11 of 12)

Reference: Sections 3.1 - 3.4



KEY TO CARS DESIGN PROCEDURES (12 of 12)

Reference: Sections 3.1 - 3.4

