

5.4 DESIGN PROCEDURES FOR SECTION 3.3

[Table 5.4-1](#) lists the Design Procedures for [Section 3.3 Surface Elements](#).

Table 5.4-1 Design Procedures for Section 3.3

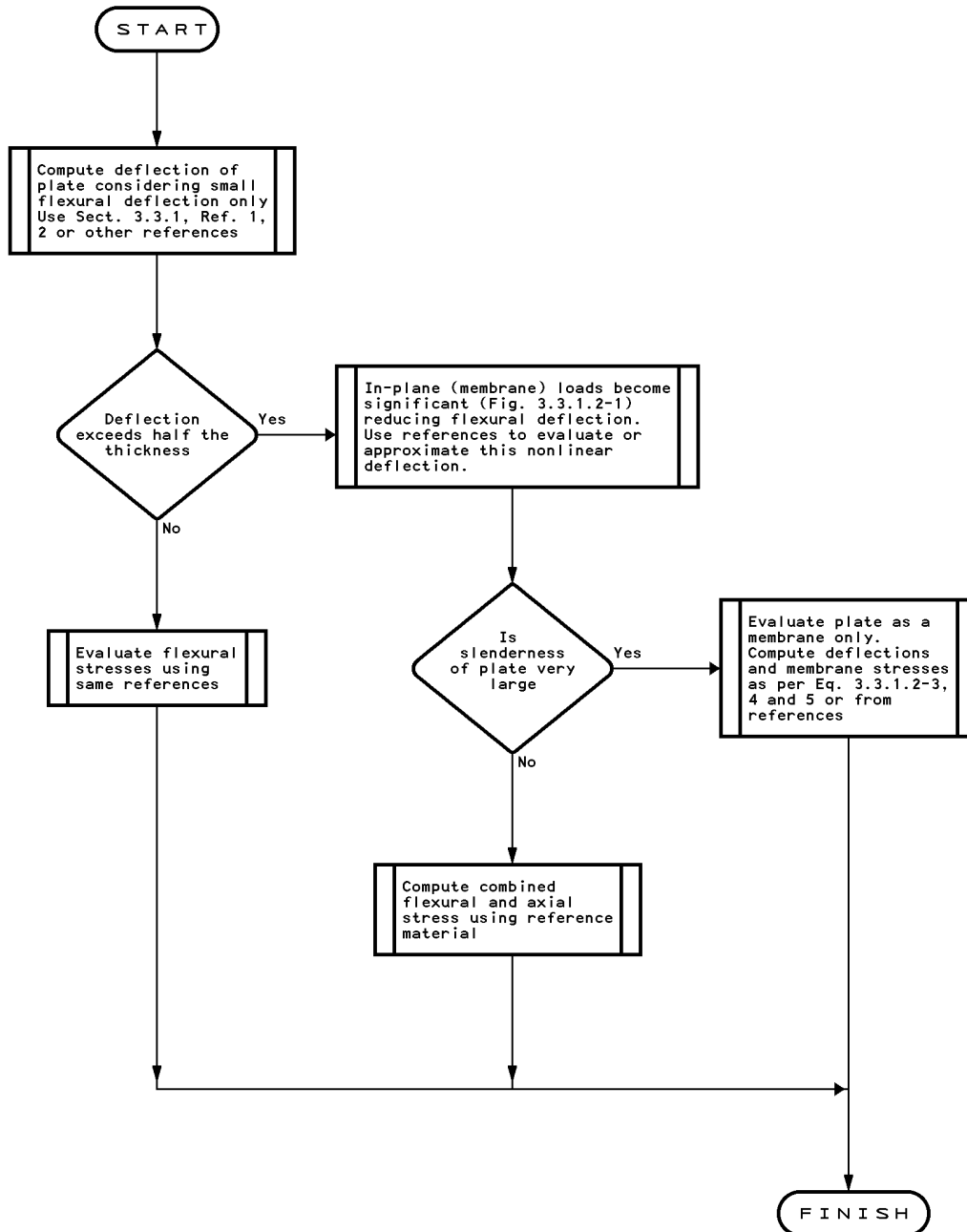
Design Procedures	Reference Section	Title
3.3-1	3.3.1	Overview: Integrity of Flat Plates
3.3-2	3.3.1	Deflection of Flat Plates
3.3-3	3.3.2, 3.3.3	Lateral Integrity of Curved Plates with Uniform Compression
3.3-4	3.3.4	Dent Resistance



DESIGN PROCEDURE 3.3-1

Overview: Integrity of Flat Plates

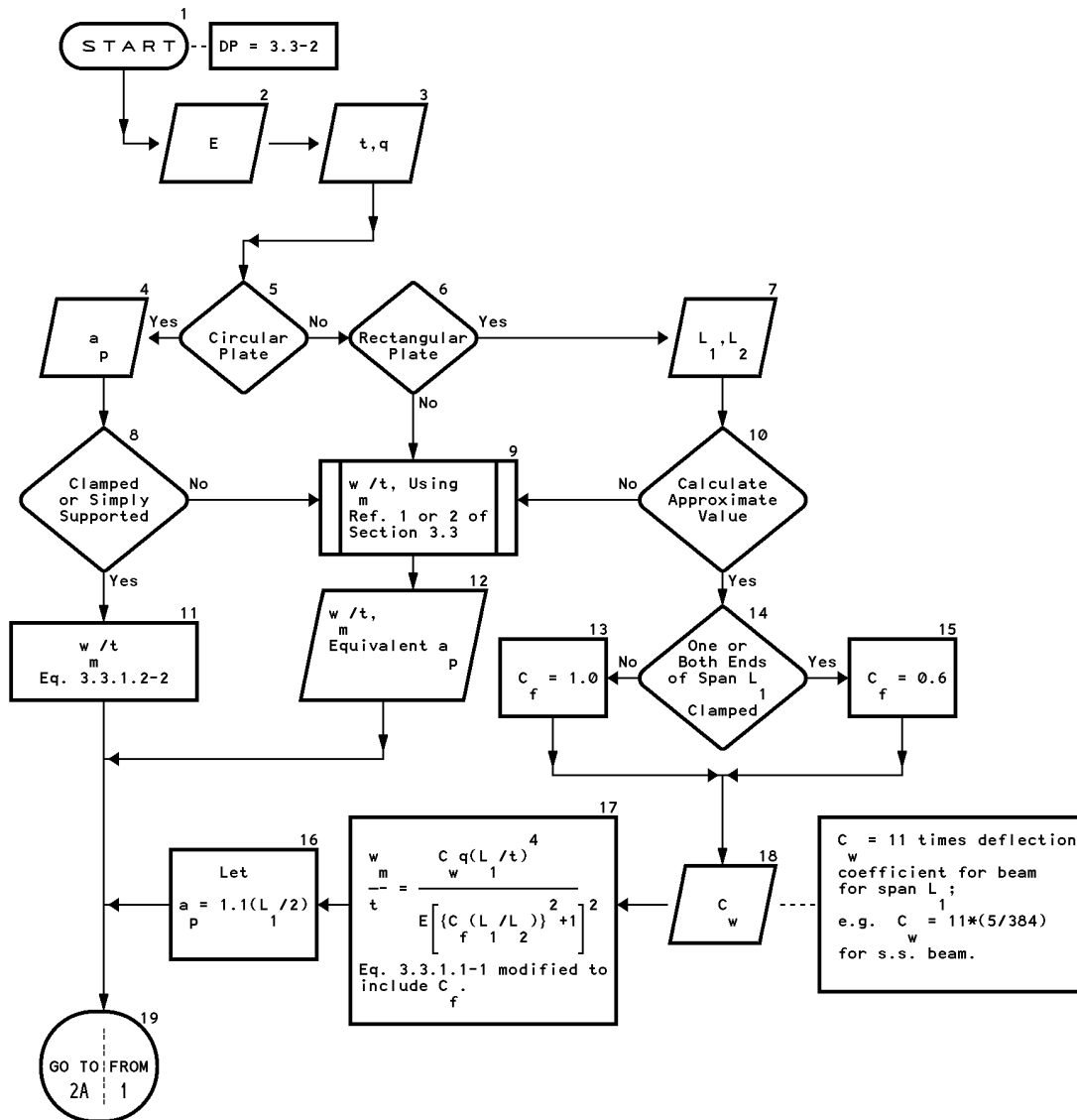
Reference: Section 3.3.1



DESIGN PROCEDURE 3.3-2 (1 of 2)

DEFLECTION OF FLAT PLATES

Reference: Section 3.3.1

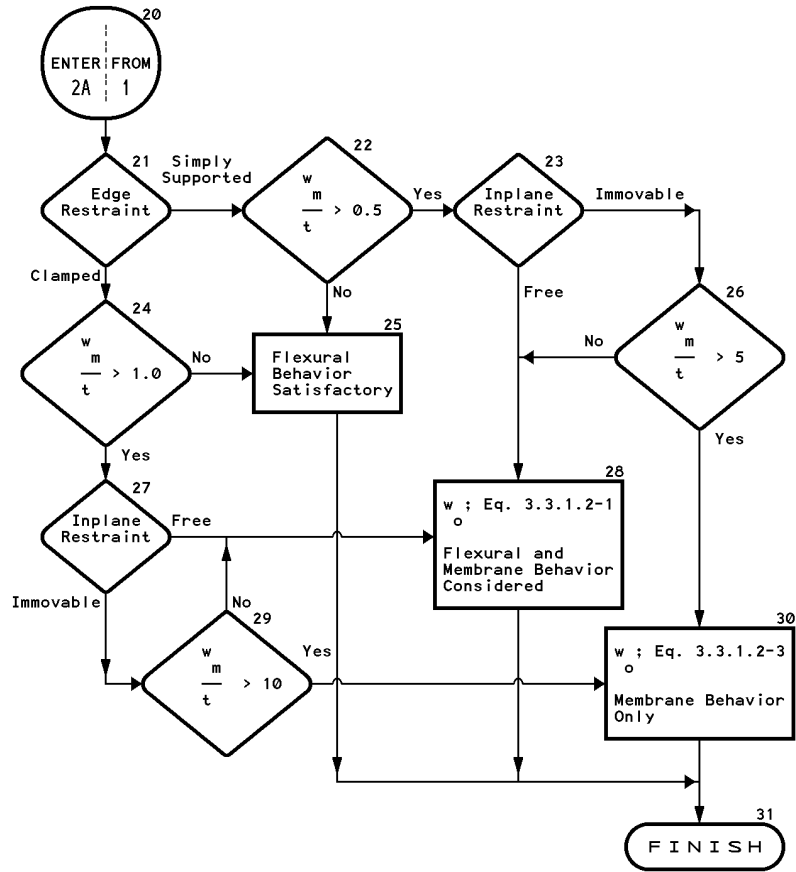


C_w = 11 times deflection w coefficient for beam for span L₁; e.g. C_w = 11*(5/384) for s.s. beam.

DESIGN PROCEDURE 3.3-2 (2 of 2)

DEFLECTION OF FLAT PLATES

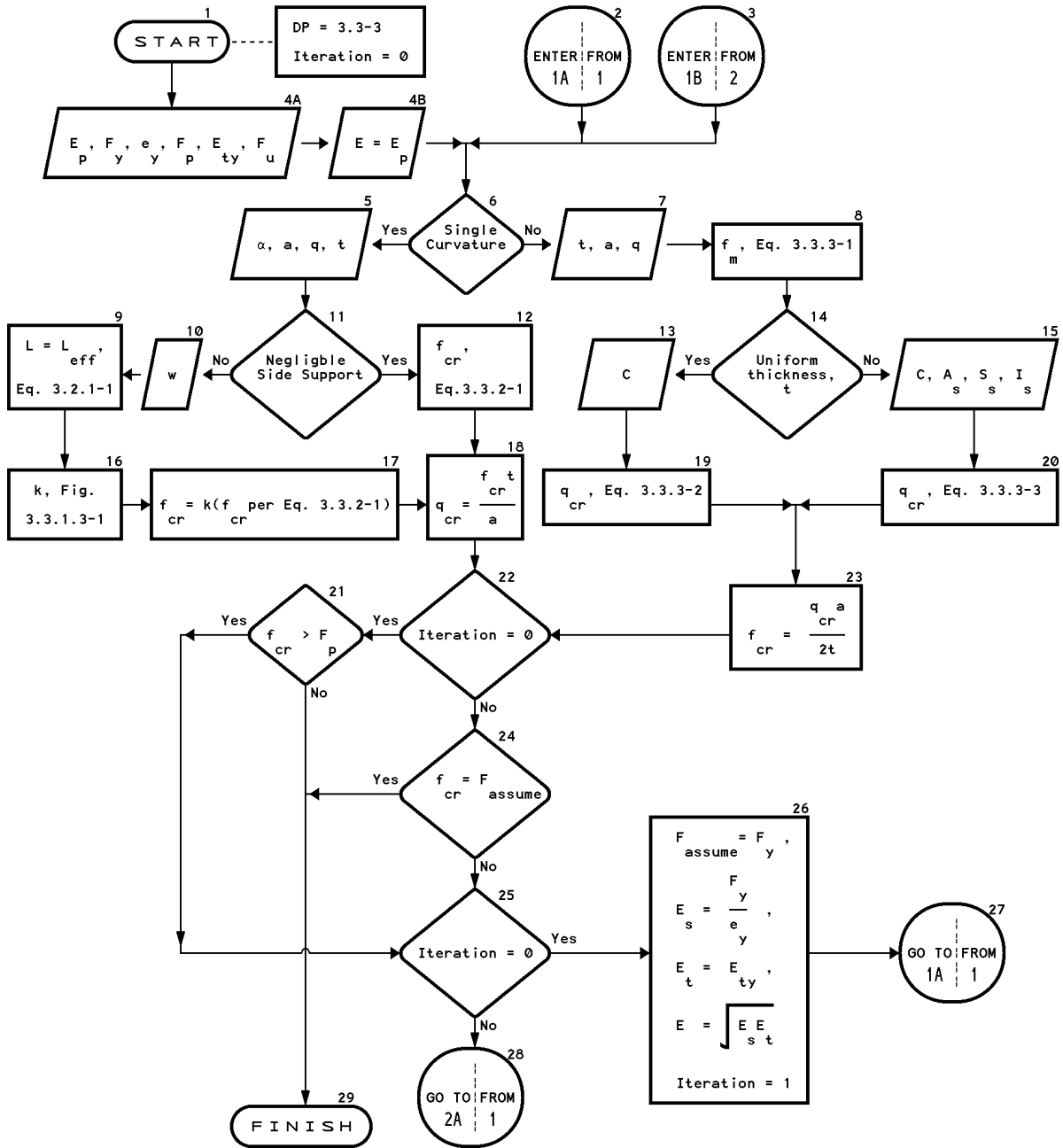
Reference: Section 3.3.1



DESIGN PROCEDURE 3.3-3 (1 of 2)

LATERAL INTEGRITY OF CURVED PLATES WITH UNIFORM COMPRESSION

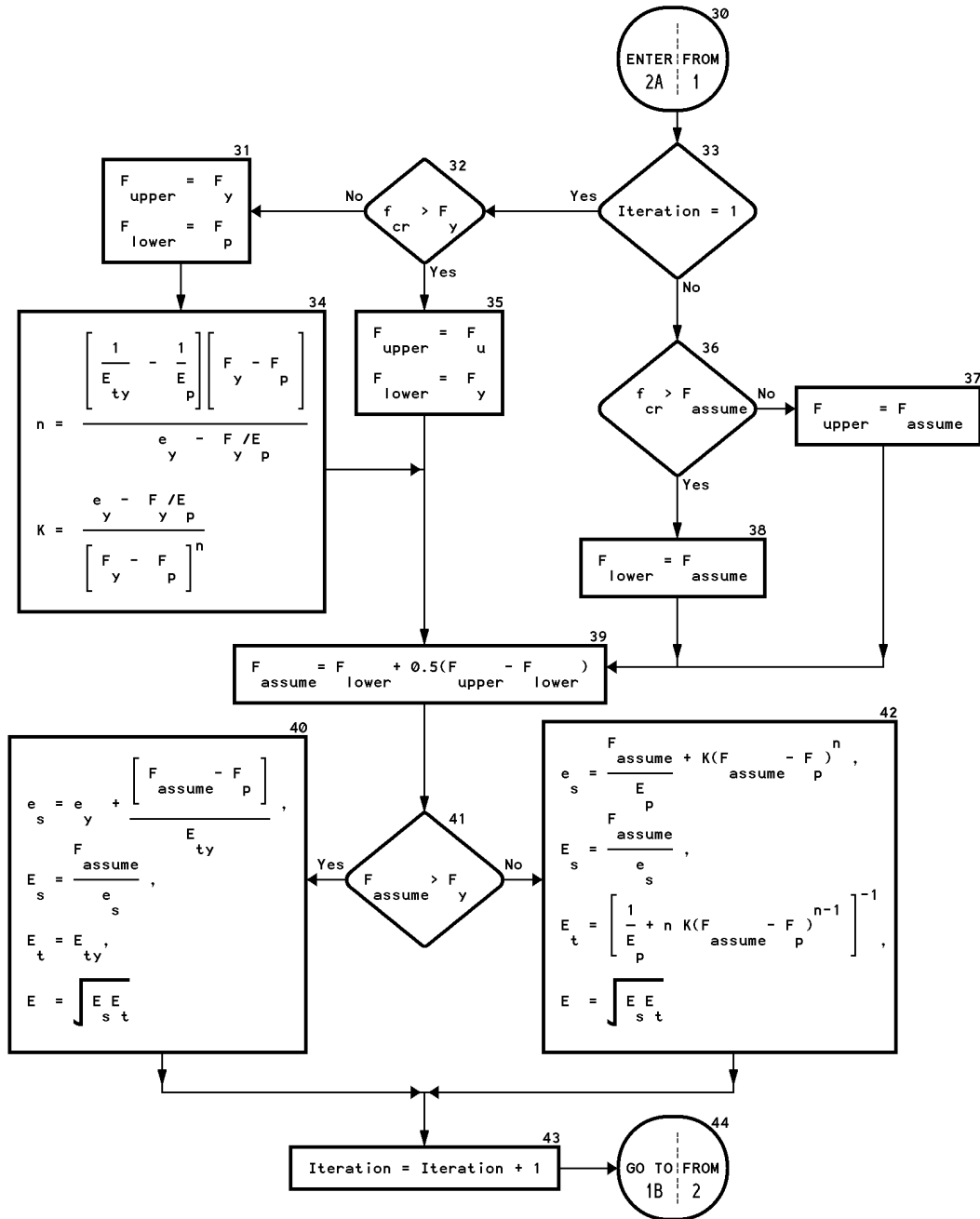
Reference: Section 3.3.2, 3.3.3



DESIGN PROCEDURE 3.3-3 (2 of 2)

LATERAL INTEGRITY OF CURVED PLATES WITH UNIFORM COMPRESSION

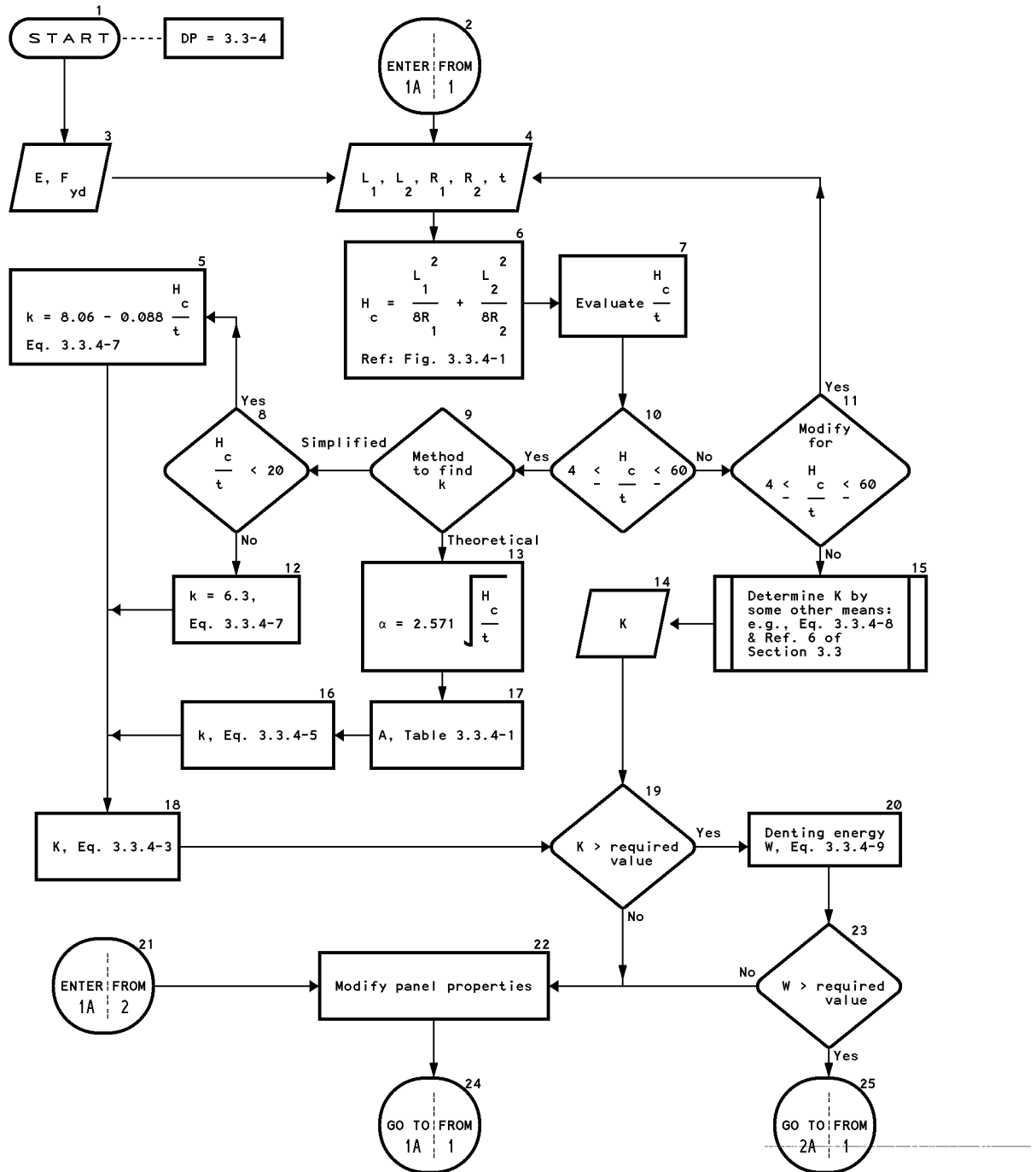
Reference: Section 3.3.2, 3.3.3



DESIGN PROCEDURE 3.3-4 (1 of 2)

DENT RESISTANCE

Reference: Section 3.3.4



DESIGN PROCEDURE 3.3-4 (2 of 2)

DENT RESISTANCE

Reference: Section 3.3.4

